



CASCADE AUDIO ENGINEERING  
WWW.CASCADEAUDIO.COM

# Cotton Insulation

Category: Acoustic Absorption  
Installation

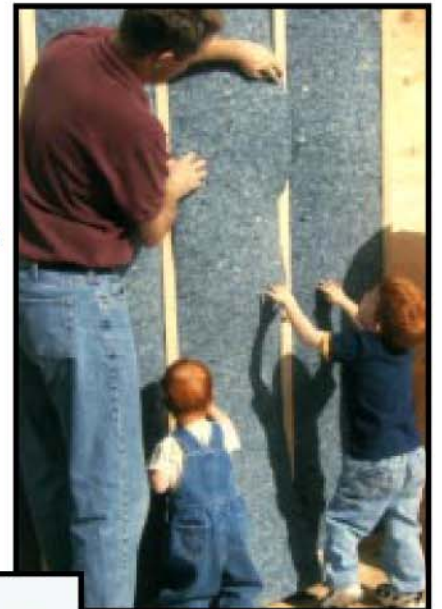
## Installation Instructions for...

### UltraTouch<sup>®</sup> SoftSounds<sup>™</sup> Natural Cotton Fiber Insulation

1. UltraTouch is compressed for shipping purposes, give the batts a quick shake prior to installing. This will help accelerate the natural rebounding properties of the fibers.
2. Install UltraTouch between the studs or floor joists by simply fitting each batt firmly into place. If building codes require a vapor barrier, it should be applied towards the living area. If you need to cut the UltraTouch to fit it into the wall cavity either use scissors or tear each batt with your hands. (UltraTouch does not itch like fiberglass insulation) The insulation should fit snugly between the framing. In the event that the construction does not allow the batt to friction fit into the wall, use a staple or nail to secure the top of each batt (or wherever necessary) so the product does not fall to the bottom of the wall cavity.
3. Cut or tear the insulation to fit snugly around obstructions such as plumbing, vent lines, and electrical boxes. Use any left over pieces to fill small openings around windows and doors. For more precise cuts use an electric carving knife.
4. The UltraTouch insulation does not necessarily have to fill the entire cavity although the thicker the product, the more acoustical absorption will take place. It does not matter where in the cavity the UltraTouch is placed in regards to being closer to one wall than another, it will have the same acoustical performance either way.
5. Either a 4-mil or 6-mil poly-vapor retarder will need to be installed if this is an exterior wall. The interior finish material such as drywall should be installed as soon as the insulation is placed. Defer to local building codes pertaining to vapor retarder installation.



Safe For  
You & The  
Environment



ASTM E-84  
Class A  
Non-flammable